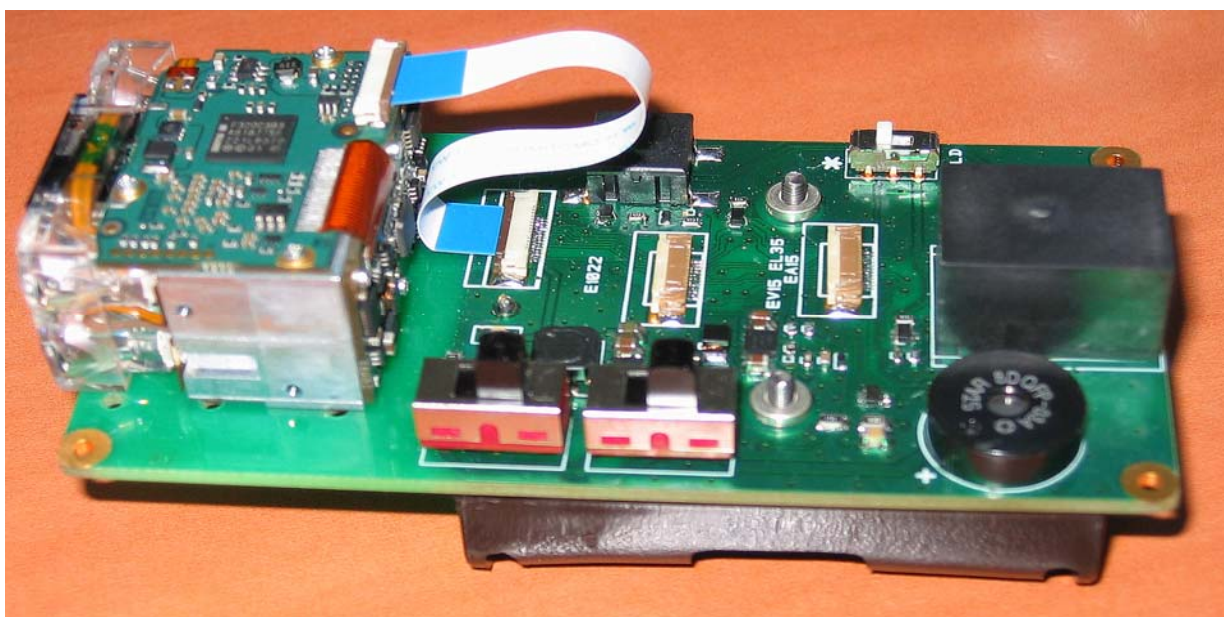


# EX25 DEMONSTRATION BOARD

*Compatible with:*

- EX25 SCAN ENGINE
- EA15 DECODING BOARD



# Revision

REV	NOTA	AUTHOR	DIFFUSION	DATE
A	<a href="#">315194</a> Document creation	CD	VENTURE WORKM	27 Feb 07

# Contents

<b>EX25 DEMONSTRATION BOARD</b> .....	page 1
<b>REVISION</b> .....	page 2
<b>CONTENTS</b> .....	page 3
<b>EX25 DEMO BOARD --&gt; BOMS': EX25DB-ROHS-00 Rev A</b> .....	page 4
<u>ELECTRONIC BILL OF MATERIAL EX25 DEMO BOARD: EX25DB-ROHS-01 Rev A</u> .....	page 4
COMPONENT BOM.....	page 4
BARE PCB: DB_EX25_Rev C (see appendix A).....	page 5
Component Assembly .....	page 5
PCB dimension: DBEX25_ELEC_001 Rev C .....	page 5
Gerber files .....	page 5
<u>MECHANICAL BILL OF MATERIAL EX25 DEMO BOARD: EX25DB-ROHS-02 Rev A</u> .....	page 6
<u>PRODUCT LABEL EX25 DEMO BOARD: EV15DB-LBL-002 Rev A</u> .....	page 6
<b><u>MOUNTING ORGANIZATION CHART</u></b> .....	page 7
<u>EX25DB-ROHS-00 Rev A: ROHS EX25 DEMO BOARD</u> .....	page 7
<b>APPENDIX A: DB_EX25</b> .....	page 8
<u>SCHEMATIC DRAWINGS - Rev 1.2</u> .....	page 8
<u>PCB LAYOUT - Rev B</u> .....	page 9

# EX25 DEMO BOARD ► BOMS': EX25DB-ROHS-00 Rev A

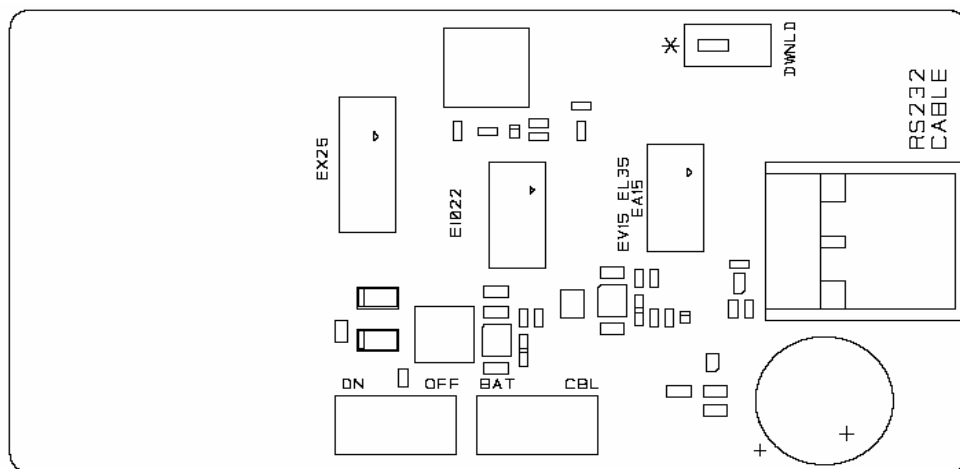
## ELECTRONIC BILL OF MATERIAL EX25 DEMO BOARD: EX25DB-ROHS-01 Rev A

### COMPONENT BOM

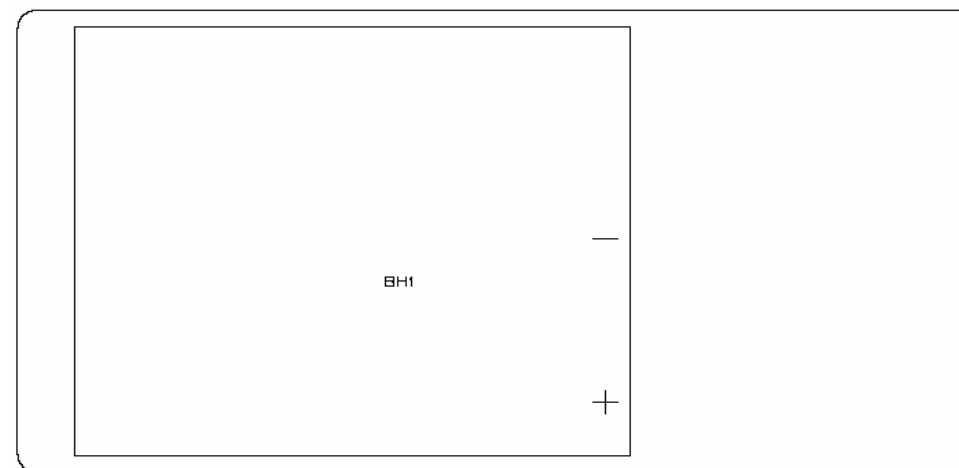
Item	Qty	Reference	Value	PCB Footprint	Manufacturer
1	1	BH1	3*AA holder	see doc	Keystone 2464
2	1	C1	22uF / 6V3	C0805	22uF X5R 6V3min +/-20%
3	4	C2,C7,C8,C9	10uF / 10V	C0805	10uF X5R 10Vmin +/-20%
4	1	C5	100nF	C0603	100nF X5R 6V3min +/-20%
5	1	C6	470nF	C0805	470nF X5R 16Vmin +/-20%
6	1	C10	220nF	C0603	220nF X5R 6V3min +/-20%
7	1	D1	LSM676	see doc	Osram LSM676
8	1	D2	LGR971	see doc	Osram LGR971
9	2	D3,D5	BAT54CW	SOT323	Philips BAT54CW
10	2	D4,D6	Schottky	SOD523	Philips 1PS79SB30 Philips 1PS79SB10 ST BAT30KFILM
11	1	JP1	FLEX_14	see doc	JST 14FKZ-RSM1-1-TB(LF)(SN)
12	2	JP2,JP4	FLEX_12	see doc	Molex 52746-1270
13	1	JP5	RJ10	see doc	Stewart SS-641010-NF
14	1	L1	2.2uH	L1210	Murata LQH32CN2R2M33
15	1	L2	2.2uH	6x6mm	Epcos B82462-G4222-M
16	1	PB1	3CSH9	see doc	Multimec RA3CSH9
17	2	R1,R3	560K	R0603	560K 1%
18	1	R2	62K	R0603	62K 1%
19	1	R4	100K	R0603	100K 1%
20	1	R5	330	R0805	330 5%
21	1	R6	150	R0805	150 5%
22	1	R7	33	R0805	33 5%
23	5	R8,R9,R10,R11,R12	47K	R0603	47K 5%
24	1	R13	1M	R0603	1M 5%
25	1	R14	1K	R0603	1K 5%
26	1	SP1	Buzzer_pol	see doc	Star Micronics QFP03A
27	2	SW1,SW2	1101M2S3CQE2	see doc	ITT 1101M2S3CQE2
28	1	SW3	SSSS222700	see doc	ALPS SSSS222700
29	2	S1001,S2001	STRAP	R0603	strap 0 ohm
30	3	S3,S1002,S2002	<b>NOT INSTALLED</b>	R0603	
31	1	T1	UMH3N	UMT6	Rohm UMH3N Diodes DDC143TU-7-F
32	2	U1,U2	TPS63000DRC	QFN_10	Texas Intruments TPS63000DRC
33	1	U5	NL27WZ16DFT2	SC70_6	On Semiconductors NL27WZ16DFT2G Texas Instruments SN74LVC2G34DCK

*BARE PCB: DB\_EX25\_Rev C (see appendix A)*

- COMPONENT ASSEMBLY - Rev A



DB\_EX25  
COMPONENT LOCATION



DB\_EX25  
COMPONENT LOCATION

- PCB DIMENSION: [DBEX25\\_ELEC\\_001 Rev C](#)

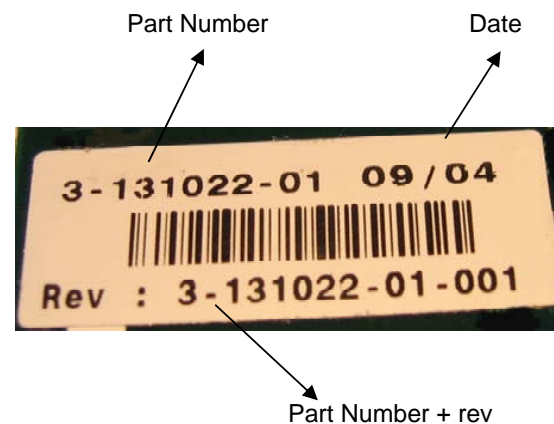
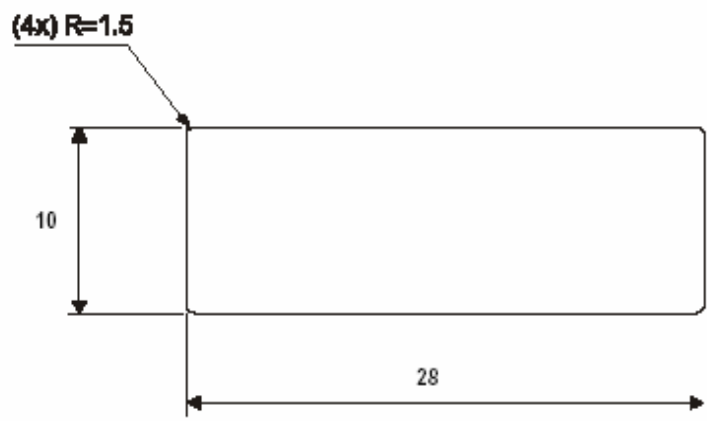
- GERBER FILES

FILE NAME	REV
<a href="#">GERBER-dbex25-C.zip</a>	C

## MECHANICAL BILL OF MATERIALS EX25 DEMO BOARD: EX25DB-ROHS-02 Rev A

Item	Qty	Part Number	Designation	Rev	Manufacturer
1	2	KF2 M2.5x0.45	Nut to be inserted		TITANOX
2	2	005 2370 000 05	Plastic spacer (Ø5-2.6 x 2)		SKIFFY
3	2	Philips head FZ M2.5 x 8 black oxide	Counter sunk screw		

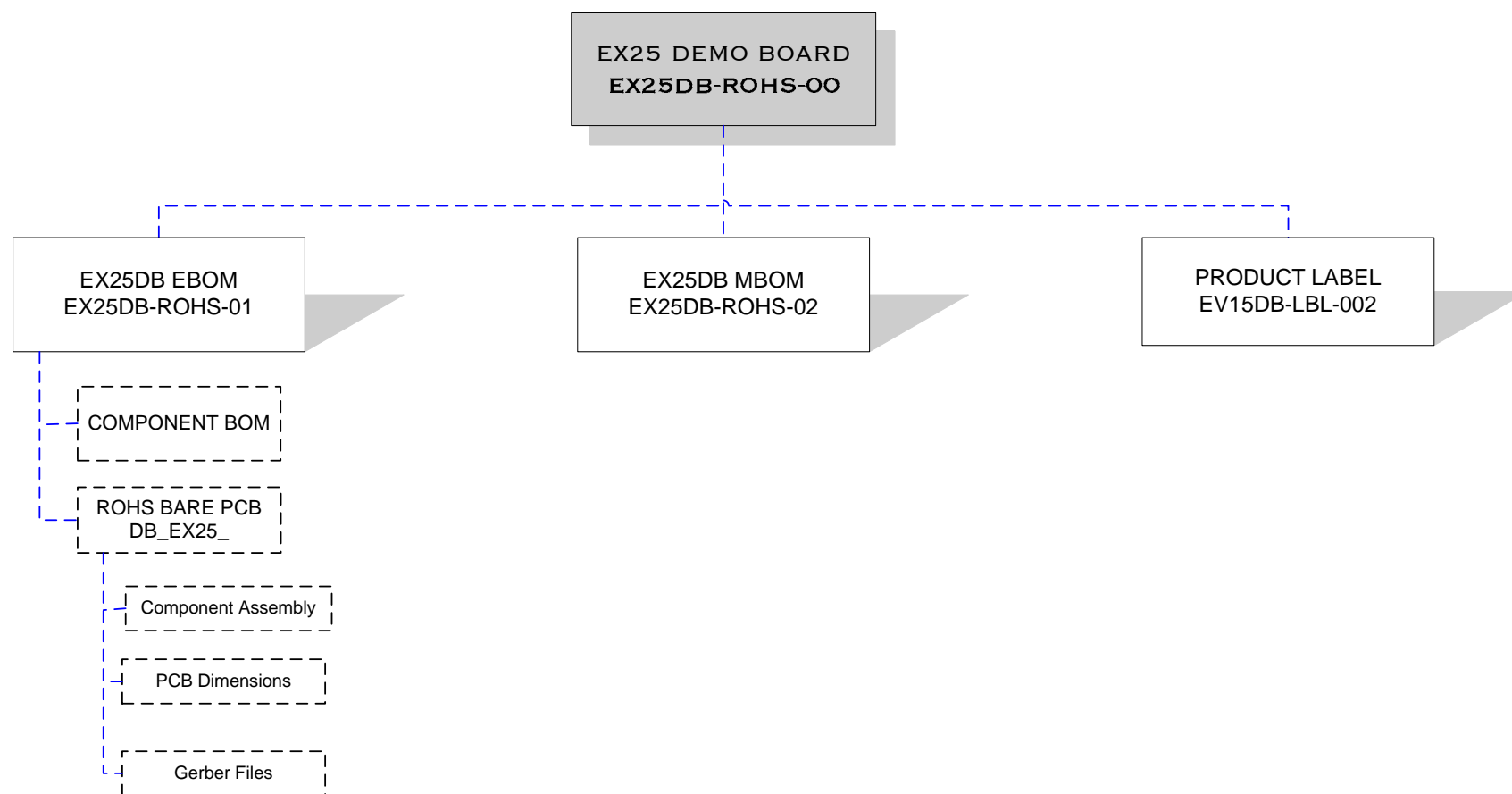
## PRODUCT LABEL EX25 DEMO BOARD: EV15DB-LBL-002 Rev A



*this drawing is just an example  
for information only!*

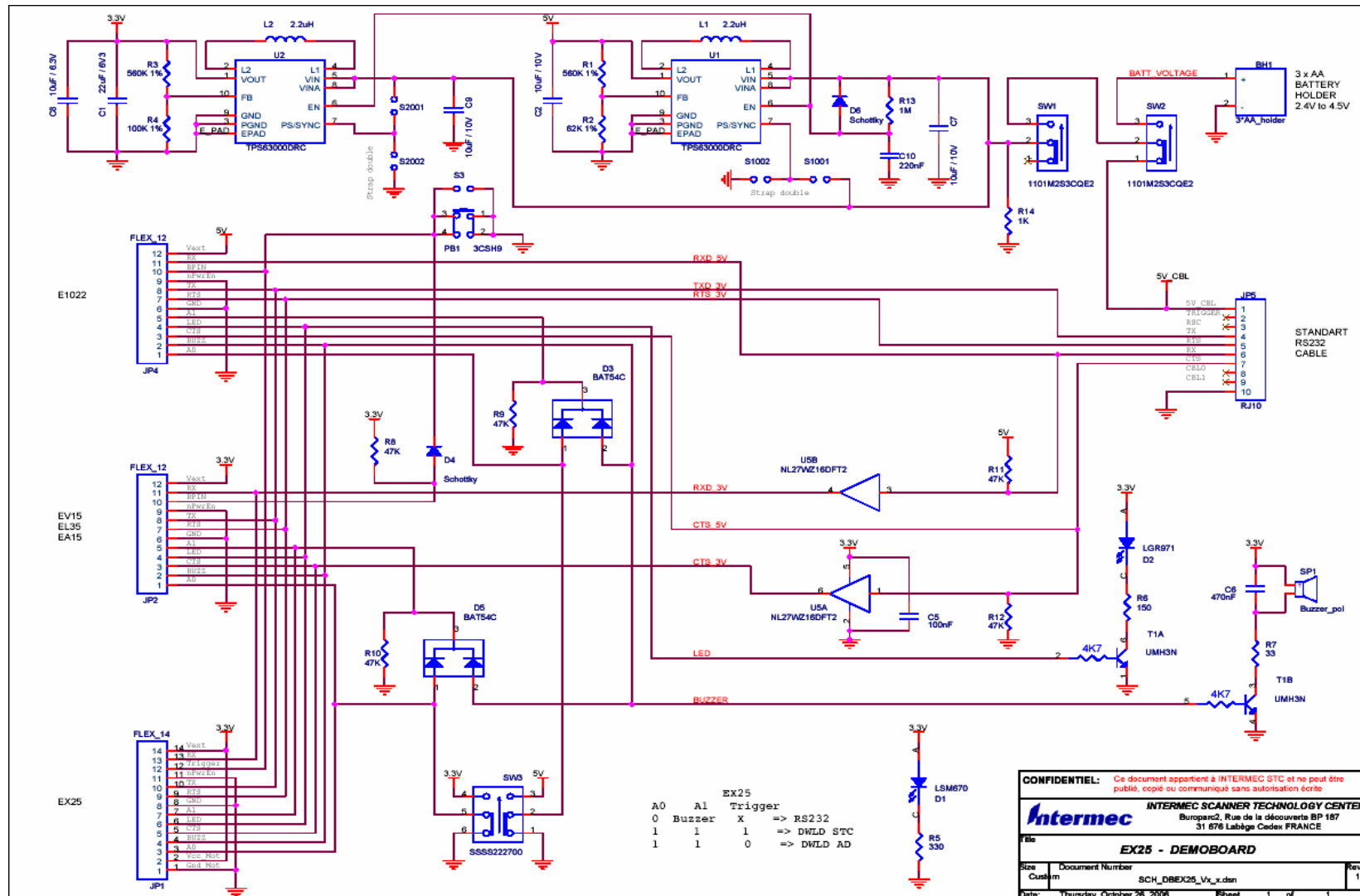
# MOUNTING ORGANIZATION CHART

## EX25DB-ROHS-00 Rev A: ROHS EX25 DEMO BOARD

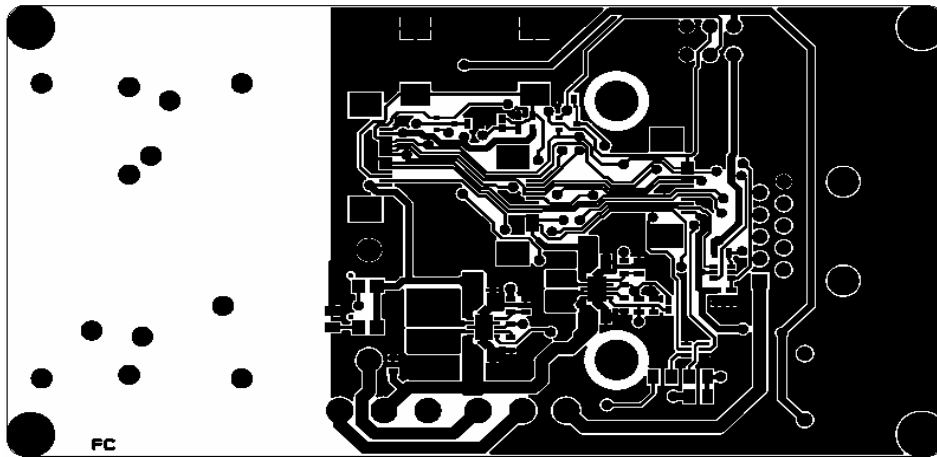


# APPENDIX A: DB\_EX25

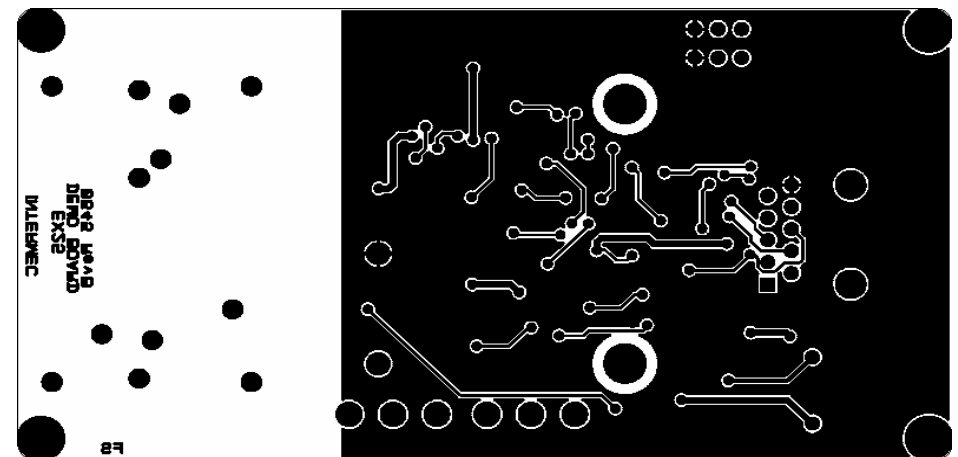
## SCHEMATIC DRAWINGS - Rev 1.2



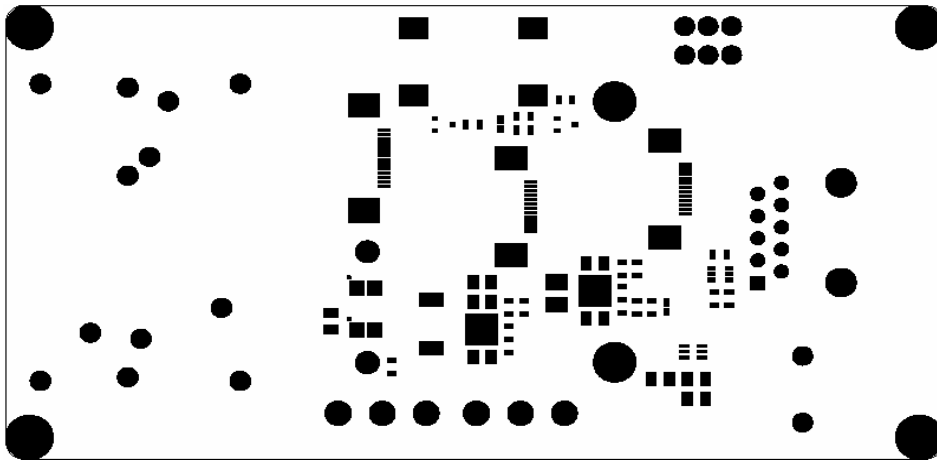
## PCB LAYOUT - Rev B



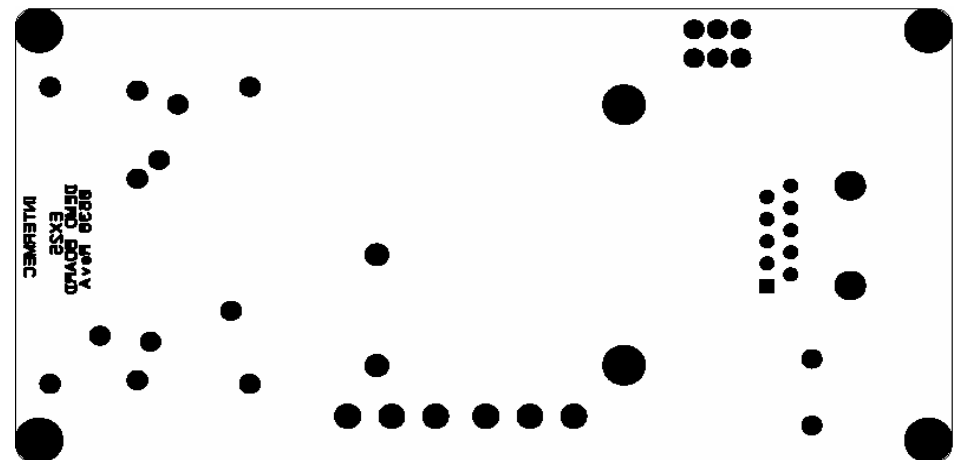
DB\_EX25  
COMPONENT FACE



DB\_EX25  
SOLDERING FACE



DB\_EX25  
VARNISH COMPONENT FACE



DB\_EX25  
VARNISH SOLDERING FACE